



UNIVERSITY OF
CHICHESTER

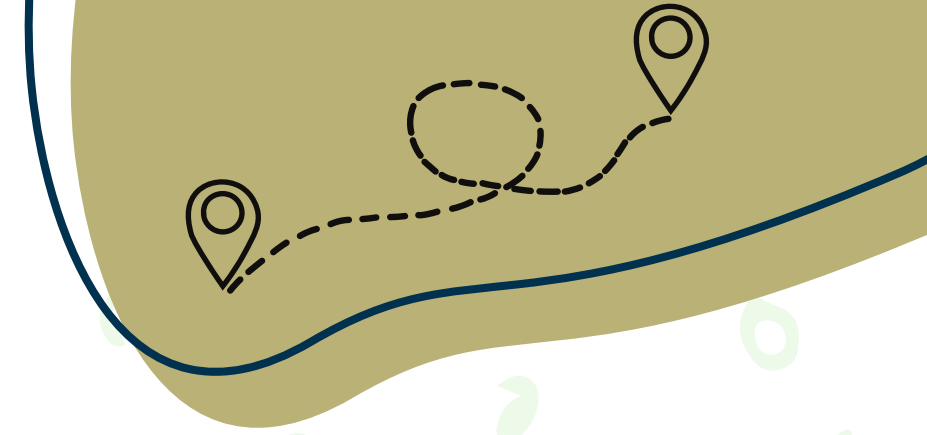
Careers and Employability Service

Destination Insight:

Study & Work Abroad Drop In



Topics for today:



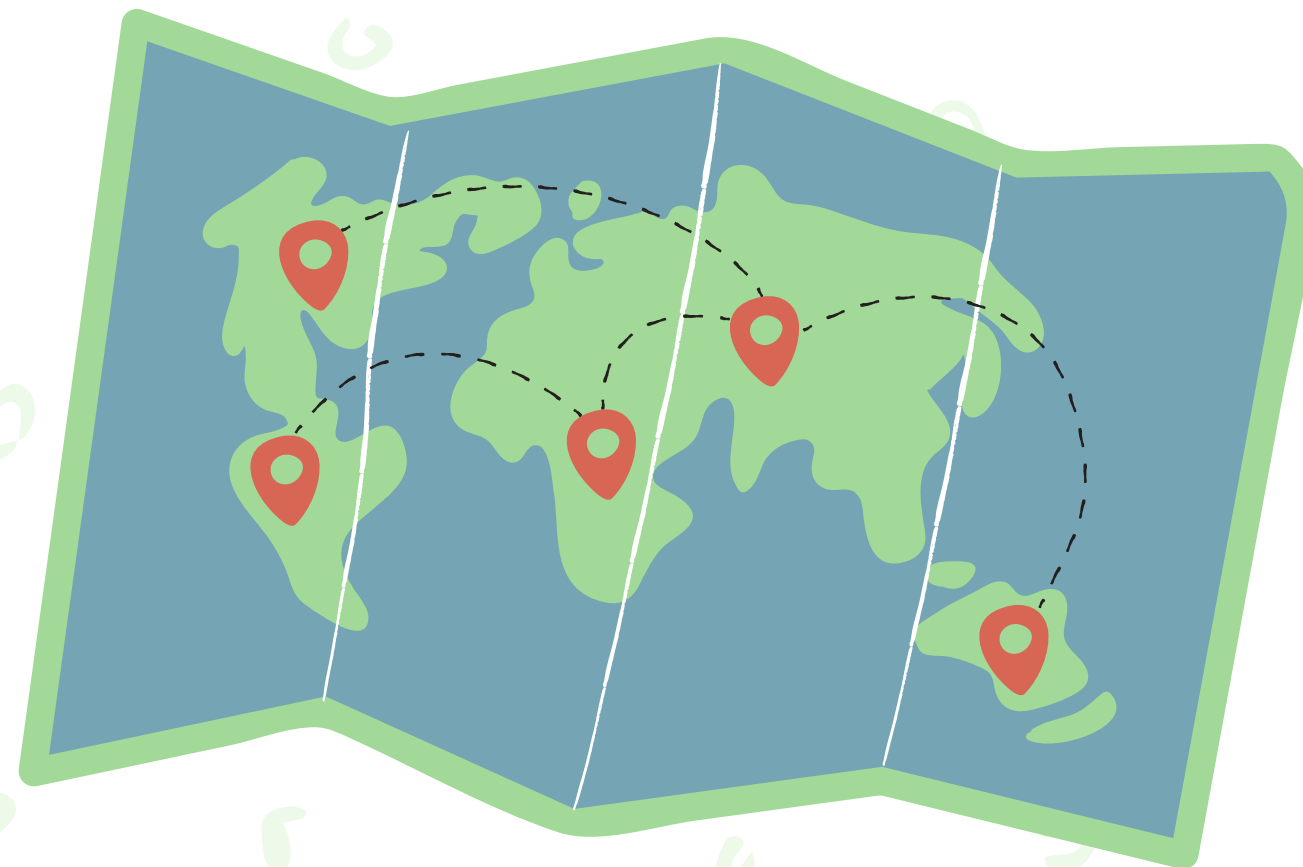
Definitions

Key Information

The Process

Funding

Technicalities



Definitions

Study & Work Abroad:

- *Exchange-Fee-waived, credit-bearing mobility with a Partner Institution.*
- *Paid Exchange-Fee paid, credit bearing mobility with a NON-Partner Institution.*

- *Study & Work Abroad Advisor-Application, nomination, support before/during/after the mobilities facilitator.*
- *Exchange Tutor-Academic person who manages the academic aspects of a mobility.*

- *Partner Institution-An abroad partner with an existing exchange agreement in place with The University of Chichester*

- *Turing Funding-A Government Scheme which supplies funding for students to travel abroad.*

Credits

Credit Transfer

Your time abroad is an integral part of your students. At the end of your stay, your credits abroad will be transferred back to the University of Chichester and these will form your total credits for your graduation.

Who can apply?

Any full time student

*Average grade of 55%
or higher*

*70% or higher
attendance*

A strong motivation!

*Mitigating circumstances will be considered on a case-by-case basis.
The Study & Work Abroad Team are responsible to verify if you meet the
criteria, and support you through the process.*



When can I go?

*One Year Abroad 2024/2025.
This is the equivalent of your
second year of study.*

*Second semester of
2024/2025 during your
second year of studies.*

*For a work placement, you
can go anytime!
Including within 12 months of
your graduation.*

*In some cases, you can go for your first semester of your third year of study.
This must be approved by your academic advisor.*

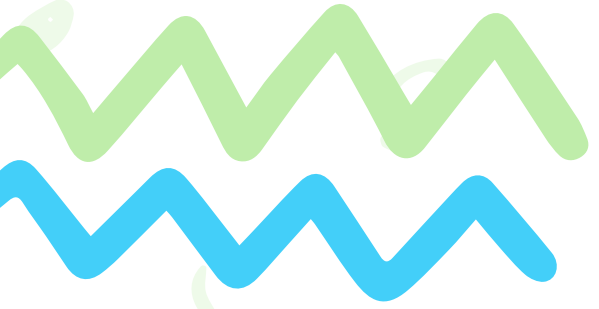
This is in very rare cases, and is not a normality.



Where can I go?

*Here you can access our Universities
Partner Institutions*

But you can go to any International location!



Application Process



Application Process



Application Process

Access ChiCareers: Pathway -Study Abroad Application

**DEADLINE FOR
APPLICATIONS:
7th of April 2024**

- Identify your ideal Partner or non-Partner University.
- Do your own research about the destination, the modules, the cost of living, etc.
- Talk to your Exchange Tutor.

Finances & Grants

Fees

One Semester – you pay your fee to the UoC in full.

One Year – you pay reduced fee to the UoC (15% more or less of the full amount.

No fee will be paid to hosting Institution.



*Student Finance UK
If you are beneficiary
to the maintenance
loan, you will keep
receiving this. The
amount might be
different.*

*Travel Grants available
through Student
Finance. Evidences will
be needed.*

Turing Scheme

*The total amount depends on the length of your
Stay & Destination*

Uplift for disadvantaged students & SEND.

All destinations are suitable.

The Turing Scheme

UK Government Scheme:

- *The University is the beneficiary of the grants but the Government is responsible for the allocation.*
- *Receiving the grant implies following a documental and evidences-based process.*

TURING

SCHEME

Funded by the UK's global
programme to study and work abroad

The Turing Scheme

Funds and Finances – examples

Student, not disadvantaged, in higher living cost country e.g. USA or Canada with household income under £39,000

20th August to 22nd December, semester one (Fall semester)

Turing Standard Living Grant of £1,520, 80% paid in September, 20% on return**

Student Finance Travel Grants support with costs for one return flight, visa, travel abroad, travel to and from airport and medical insurance costs (this is normally assessed on your household income) – you first pay £303 and then remaining costs can be claimed through student finance e.g. sfe

Receive your maintenance loan, you may receive more. Your 1st instalment can be paid 25 days before the start of the partners term

Tuition fees are paid to University of Chichester as normal

**Subject to terms & conditions and Turing Scheme payment approval*

The Turing Scheme

Funds and Finances – examples

Disadvantaged Student, in higher living cost country e.g. USA or Canada with household income under £25,000

20th August to 22nd May (1 year)

Turing Standard Living Grant of £3,582, 80% paid in September, 20% on return**

Turing Uplift Grant of £1,037, 80% paid in September, 20% on return**

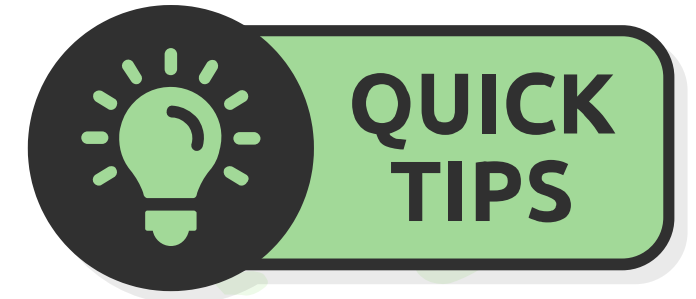
Turing Travel Grant of £750, 80% paid in September, 20% on return**

Receive your maintenance loan, you may receive more. Your total loan can be paid in two instalment. Your 1st instalment can be paid 25 days before the start of the partners term and your second instalment in January

Reduced tuition fees are paid to University of Chichester as normal.

Subject to terms & conditions and Turing Scheme payment approval

Helpful tips



Things to consider

- *VISA/Study Permit (cost – timing – documents to produce);*
- *Cost of living abroad;*
- *Accommodation in the UK, abroad, and when you are back in the UK;*
- *Insurance (Travel & Medical);*
- *Documents.*

Resources

- [Moodle](#)
- [Website](#)
- [ChiCareers](#)
- [Turing Scheme](#)
- [Travel Grant](#)
- [Study Abroad – Prospect](#)
- *Gone International: expanding opportunities – Literature on the benefit of the Exchange.*
- [Foreign Travel Advice](#)

*** THIS INFORMATION IS THE MOST UPDATED. MOODLE AND THE WEBSITE ARE UNDER REVIEW.

Q

A

Question Time





The Careers and Employability Service

Bishop Otter Campus-The Careers Centre, LRC
Bognor Regis Campus-LRC, Room 5, Room 0.16
careers@chi.ac.uk
01243 816035



@chiunicareers



@chiunicareers



@University of Chichester Careers Service



@thenextrung



UNIVERSITY OF
CHICHESTER

Careers and Employability Service