



UNIVERSITY OF  
CHICHESTER



Teaching  
Excellence  
Framework

# STUDENT ACCOMMODATION

2024/2025





# Your New Home

Starting university for many people means moving out for the first time. While this is an exciting experience we understand it can also be a daunting one. So, we are here to help make the transition go as smoothly as possible.

Our university-managed accommodation is situated across our Chichester and Bognor Regis campuses as well as in the city of Chichester. We offer rooms to suit all budgets and lifestyles including catered or self-catered, ensuite or shared facilities and on or off campus.

Our accommodation varies from on campus traditional student halls of residence to new student accommodation villages in the centre of Chichester. Our halls of residence and University accommodation are professionally managed, secure and supported by our team in the Accommodation Office 24/7.

All of our rooms and facilities are comfortable and well equipped, we also include internet access, heating, electricity and basic contents insurance in the rent. Please see our website for further information on the internet access supplied in our bedrooms and whether the connection is Wifi only or wired (via an ethernet port) and WiFi.

We are confident that you'll find a room and options that suit you.

All our accommodation is professionally managed to the ANUK Code of Standards



Living in university-owned and managed accommodation is a popular experience and it makes it easier to meet other students and make new friends. You may find you meet people from other courses and develop good friendships within days of settling into your accommodation.

To help this process there are many activities and events throughout the year which will give your social life a real boost! On campus everything is close by, which helps minimise your travel experiences.

## HIGHLIGHTS OF STAYING IN UNIVERSITY ACCOMMODATION

- A great way to meet new friends
- All utility bills are included
- Internet access is included
- All of our halls of residence are safe, secure and well managed
- There are accessible facilities and adapted rooms available on request
- All kitchens have a hob, oven, refrigerator, freezer, microwave, kettle and toaster
- Access to an on-site launderette

Whatever your accommodation choice you will find a great atmosphere with a welcoming student community. We feel it is a great place to live and study and we are sure you will have many lifelong memories to take away with you at the end of your stay.

## ACCOMMODATION GUARANTEE

We can guarantee you a room in university-managed accommodation for your first year of study.

To be eligible for our guarantee, you need to:

- Have applied to us by the 31st January 2024 UCAS deadline
- Put us as your firm choice
- Be studying full time

# Types of Accommodation – what are your options?

## On Campus

Both our campuses have on-site accommodation, which can enable a reduction in commuting time, and means you have everything in one place. Some people really like this option for its convenience. There is a mixture of ensuite bedrooms, or rooms where the bathrooms are shared with others. There is also a choice between catered accommodation and self catered (see further details below).

## Off Campus

We have off-campus managed properties throughout Chichester and Bognor. Some of our properties are larger student villages near conveniences like supermarkets, restaurants and entertainment. We do have smaller properties with more of a residential house layout and feel to them. All our Chichester off-site managed properties are within a 30-minute walk to the Campus, with the Bognor off-site accommodation located within a short 10-minute walk to the Bognor Regis Campus. The accommodation is self-catered with a fully furnished kitchen and communal area. Some of our managed properties have bus links to their local campus with onward connections to the alternative campus – please check our website to see further information about transport options available to you and more.

## Ensuite

These rooms include single occupancy bedroom space and come with your own bathroom – toilet, sink and shower.

## Shared bathroom

These rooms include single occupancy bedroom space where you will share a shower and toilet block with your flatmates. There are multiple toilets and showers per flat

## Catered

All accommodation on the Bognor Regis Campus, and most of the rooms at the Bishop Otter Campus are catered. This means, as part of your rent, you will be provided with a daily allowance to spend in the catering facilities at either campus. You will have £9.10 per day Monday to Friday, and £4.50 per day at weekends. A brunch service is provided during Reading Weeks and

Inter-Semester Weeks; there is no catering service during the Easter and Christmas vacations but this is factored into the annual accommodation fee.

There are also communal kitchen facilities available in all halls, should you wish to use them at any time.

## Self Catered

In self-catered accommodation you can cook for yourself in the communal kitchens.

Each kitchen will have a hob, oven, microwave, refrigerator, freezer, kettle and toaster. No cooking and eating equipment/utensils are provided so you will need to bring your own.

## Quiet Block

Although many students enjoy the social aspect of university life, some prefer to be allocated a room in a quiet block. If this is something that appeals to you we do have rooms that cater for this requirement at Fishbourne Road East.

## Adapted Rooms

We have a range of adapted rooms for students with a disability. Most are single rooms with large ensuite wet rooms and are sold on a catered or self-catered basis. We are happy to discuss individual housing requirements and would encourage you to contact our Disability and Dyslexia Services at an early stage. This will enable us to allocate accommodation to suit your requirements.

## Other useful information

All shared facilities will be shared between no more than seven people. In some of the blocks you may only be sharing with four other people.

Due to lack of parking facilities we are unable to offer parking to students living on campus. If you are allocated accommodation off campus you may be able to purchase a designated parking permit. Residents at Fishbourne Road East or Stockbridge are not permitted to bring a car into the city due to planning restrictions.

Here is an overview of all the different types of accommodation available for first year students:

## CHICHESTER

### On campus

#### **DUNCTON HALL, ARUNDEL HALL, IFOLD HALL, PETWORTH HALL, LOXWOOD HALLS, MIDHURST HALL (CATERED, ENSUITE)**

- Catered
- Ensuite
- 39 weeks
- Bedrooms arranged in cluster flats of 6 rooms, there are also two 5-bed flats
- 100 rooms across 9 buildings
- **£212.66** per week (includes food allowance for our restaurants).



#### **SPRINGFIELDS 1-4, HAMMOND 1 AND 2 (CATERED, SHARED FACILITIES)**

- Catered
- Shared bathroom facilities
- 39 weeks
- Facilities shared between 5-6
- 70 rooms across 6 buildings
- **£187.74** per week (includes food allowance for our restaurants).



#### **ASHLING 1 AND 2, SPRINGFIELD 5 AND 6 (CATERED, SUPERIOR SHARED FACILITIES)**

- Catered
- Superior Standard shared facilities
- 39 weeks
- Facilities shared between 5 people
- 40 bedrooms across 4 buildings
- **£204.96** per week (includes food allowance for our restaurants).



#### **CHILGROVE HALL, AMBERLEY HALL, HARTING HALL (SELF-CATERED, ENSUITE)**

- Self-catered
- Ensuite
- 39 weeks
- Bedrooms arranged into cluster flats of between 3-4 rooms
- 124 rooms across 3 buildings
- **£184.10** per week



#### **HAVENSTOKE CLOSE (SELF-CATERED, SHARED FACILITIES)**

- Self-catered
- Shared bathroom facilities
- 39 weeks
- 40 bedrooms across 10 buildings
- 4 bedrooms per building
- 5 minute walk from campus
- **£143.71** per week



## Off campus

Students from either campus can apply for these Chichester city accommodation options and travel using the free inter-campus bus services\*.

### WESTGATE HALLS (SELF-CATERED, ENSUITE)

- Self-catered
- Ensuite
- 39-week licence
- Bedrooms arranged into cluster flats of 6 rooms
- 25 minute walk from campus
- **£171.78** per week



### PINEWOOD HOUSE (SELF-CATERED, SHARED FACILITIES)

- Self-catered
- Shared bathroom facilities
- 39 weeks
- 52 bedrooms
- Facilities shared between 5-7 people
- 10 minute walk from campus
- **£125.09** per week



### STOCKBRIDGE STUDENT VILLAGE (SELF-CATERED, ENSUITE)\*

- Self-catered
- Ensuite
- 39, 40 or 51 week licences
- Bedrooms arranged into cluster flats of between 5-7 rooms, there is also a 2-bed flat and an 8-bed flat
- 405 bedrooms across 5 buildings
- 30 minute walk from campus
- **£176.05** per week



### FISHBOURNE ROAD EAST HALLS (SELF-CATERED, ENSUITE)

- Self-catered
- Ensuite
- 39 or 40 weeks
- Bedrooms arranged in cluster flats of between 5-7 rooms, there is also 3-bed flat
- 134 bedrooms across 2 buildings
- 30 minute walk from campus
- **£176.05** per week



### CHICHESTER – MILLFIELD ROAD; LEWIS ROAD; SPITALFIELD LANE

- Self-Catered
- Ensuite/Shared Facilities (Lewis Road)
- 50-week licence
- Short walk from Bishop Otter Campus, Chichester
- 6 single bedrooms in each of the 3 houses
- **£168.84** (ensuite)/**£163.45** (shared facilities)
- Picture is indicative of the properties



\*Please note that Stockbridge residents can travel to the Bognor Regis campus using subsidised local bus services

# BOGNOR REGIS

## On campus

### BARBARA SMITH HALLS (CATERED, ENSUITE)

- Catered
- Ensuite
- 39 or 40 week licences
- Bedrooms arranged in cluster flats of between 6-8 rooms
- 160 bedrooms across 11 buildings
- **£212.66** per week (includes food allowance for our restaurants).



### Longbrook and Charlotte House (CATERED, SHARED FACILITIES)

- Catered
- Shared bathroom facilities
- 39 or 40-week licences
- Facilities shared between 6 people
- Large rooms available
- 59 bedrooms across 2 buildings
- **£187.74** (single) or **£203.77** (large) per week (includes food allowance for our restaurants).



## Off campus

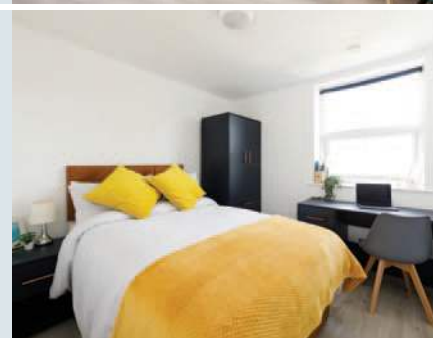
### VILLA MARIA (SINGLE ENSUITE AND STUDIO APARTMENTS)

- Self-Catered
- Ensuite
- 50 week contract
- Short walk from Bognor campus
- Studio apartments for single or double occupancy
- 12 Single rooms – **£168.84**; 14 studios single occupancy – **£202.44**; double occupancy **£281.12** (weekly rates)



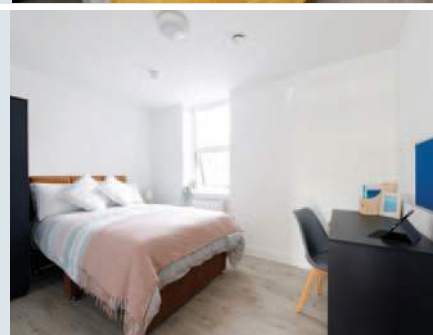
### PRINCE OF WALES BOGNOR (SINGLE ENSUITE AND STUDIO APARTMENTS)

- Self-Catered
- Ensuite
- 50 week contract
- Short walk from Bognor campus
- Studio apartments for single or double occupancy
- 14 Single rooms – **£179.90**; 4 studios single occupancy – **£202.44**; double occupancy **£281.12** (weekly rates)



### GARTH HOUSE (SINGLE ENSUITE AND STUDIO APARTMENTS)

- Self-Catered
- Ensuite
- 50 week contract.
- Short walk from Bognor campus
- Studio apartments for single or double occupancy
- 11 Single rooms – **£179.90**. 5 studios single occupancy – **£202.44** double occupancy – **£281.12**. (weekly rates)



For all our accommodation, on and off campus, the accommodation fees are divided into three installments of 40%, 40% and 20%. The first being due shortly after your arrival, at the beginning of October, the second in early January and the third at the end of April. Prices are correct at the time of printing in March 2024. Visit [chi.ac.uk/accommodation](https://chi.ac.uk/accommodation) for the most up-to-date information.

# Accommodation quick guide

Below is an overview of all the accommodation options we have to offer at University of Chichester. You can use this as a quick reference guide when looking at all the accommodation.

NB: 2023/2024 prices. Please see our website for the most up to date information.

## CHICHESTER

Hall Name	Licence Period	Self-Catered	Catered	Ensuite	Shared Facilities	On Campus	Price per Week
Amberley Hall	39	•		•		•	£184.10
Arundel Hall	39		•	•		•	£212.66
Ashling Hall	39		•		•	•	£204.96
Chilgrove Hall	39	•		•		•	£184.10
Duncton Hall	39		•	•		•	£212.66
Hammond	39		•		•	•	£187.74
Harting Hall	39	•		•		•	£184.10
Havenstoke Close	39	•			•	•	£143.71
Ifold Hall	39		•	•		•	£212.66
Loxwood Hall	39		•	•		•	£212.66
Midhurst Hall	39		•	•		•	£212.66
Petworth Hall	39		•	•		•	£212.66
Springfield 1-4	39		•		•	•	£187.74
Springfield 5-6	39		•		•	•	£204.96
Pinewood	39	•			•		£125.09
Stockbridge*	39, 40 50 or 51	•		•			£176.05
Fishbourne Road East	39 or 40	•		•			£176.05
Westgate Halls	39	•		•			£171.78
Millfield Road, Chichester	50	•		•			£168.84
Lewis Road, Chichester	50	•			•		£163.45
Spitalfield Lane, Chichester	50	•		•			£168.84

Please note that Stockbridge residents can travel to the Bognor Regis campus using subsidised local bus services





## BOGNOR REGIS

Hall Name	Licence Period	Self-Catered	Catered	Ensuite	Shared Facilities	On Campus	Price per Week
Barbara Smith Halls	39 or 40		•	•		•	£212.66
Longbrook Single	39 or 40		•		•	•	£187.74
Longbrook Large	39 or 40		•		•	•	£203.77
Charlotte House	39 or 40		•		•	•	£187.74
Villa Maria	50	•		•			£168.84
							Studio single occupancy £202.44
							Studio dual occupancy £281.12
Prince of Wales, Bognor	50	•		•			£179.90
							Studio single occupancy £202.44
							Studio dual occupancy £281.12
Garth House, Bognor	50	•		•			£179.90
							Studio single occupancy £202.44
							Studio dual occupancy £281.12

Students on our teaching courses will need accommodation which has a 40+ week licence, we will adjust the contract length as required. *All prices are correct at time of printing.*

# How to apply

Once we have received your offer you are able to apply for university-managed accommodation once the Accommodation portal opens in May. Rooms are allocated via a computer algorithm based on your preference – not a first come first served basis.



We can guarantee you a room in university-managed accommodation for your first year of study.

To be eligible for our guarantee, you need to:

- Have applied to us by the January UCAS deadline
- Put us as your firm choice
- Be studying full time

*“I lived in Harting Hall which is an on-campus, en-suite self-catered room. It was really handy for getting to morning lectures, I would be able to enjoy a coffee in my PJs until about 10 mins before! The rooms are a good size and it is a brilliant hassle-free base to have. I really enjoyed meeting my roommates and although not on the same course, I'd hope to stay in contact with them throughout my time in uni and beyond.”*

Xander, BSc (Hons) Physiotherapy, Harting Hall, Chichester Campus

Once you have received your offer of a place you'll be invited to log on to the accommodation portal in May where you will be able to apply for accommodation. The following steps should help you through your application:

- 1** To make an online accommodation application you will need to log on to your ChiView account via the University website between  
**7th May – 23rd June**
- 2** Choose your accommodation, fill out the application form and click submit.
- 3** Once all applications have been received the accommodation will be allocated by a randomised allocation system – not first come first served
- 4** You will be notified via email by the end of August if you have been successful in gaining a place in accommodation.
- 5** Within seven days of receiving your offer, you will need to log in to the Accommodation portal, check the details of your allocated room and accept the offer and sign the licence agreement.
- 6** After you have accepted your offer, we will send out helpful information regarding your halls and arrivals. We will also send you details of how to complete your e-induction in early September.
- 7** Read your Residents' Handbook and Code of Conduct before you arrive.
- 8** On arrivals weekend, collect your keys and check the room's inventory before you move in.

## Timeline

### **30th April** **Students with disability or special housing needs**

If you have a disability or special need you will have to apply for on-campus accommodation through the Disability and Academic Skills Co-ordinator by the end of April to be guaranteed a room. Please note this will be subject to an assessment and evidence may need to be provided.

### **7th May – 23rd June** **First year, full-time, home student**

If you are a UK, full-time student, with no special housing needs, you will be able to apply for university- owned accommodation from between 7th May – 23 June. (Please view the Allocation Policy on the Accommodation website for full details.) You must have made the University of Chichester your first choice and have accepted a firm offer before applying for university-owned and managed accommodation.

### **23rd June International students**

This is the deadline for all international students to apply for on-campus accommodation. As per the above details for First Year, Full-Time, Home Students. you will need to make sure you have accepted your offer of study, submitted your online accommodation application via your ChiView account and accepted your offer of accommodation (by the end of August) within seven days of receipt to be guaranteed on-campus accommodation.

### **31st August** **Successful applicants**

If you have been successful, an offer of on-campus accommodation will have been made by this date, providing you have met the conditions for study, and have returned an application for University-owned accommodation.

### **20th – 22nd September** **On-campus rooms ready to occupy**

All on-campus rooms will be ready for occupation for first-years start of term date. Information regarding Arrivals Day will be sent to you via email if you are successful in obtaining University Managed Accommodation on-campus, one week in advance of your arrival.

If you are unable to access the portal between the 7th May – 23rd June, please email [allocations@chi.ac.uk](mailto:allocations@chi.ac.uk) or call **01243 812120**

# Prices and accommodation choices

Please take the time to view all our accommodation types to see which one would best suit your needs and lifestyle.

We would encourage visiting the campus and viewing our accommodation options in person at one of our Open Days. If you are unable to attend these dates then you can book a campus tour with one of our student ambassadors.

View the options to visit at: [chi.ac.uk/visitus](https://chi.ac.uk/visitus)

While every effort is made to open rooms, throughout the year students are living in the accommodation, so it might not be possible to view all accommodation types at the time of your visit. However, we do have virtual tours of all the room types available on our website.

Scan the QR code below or visit [chi.ac.uk/virtual](https://chi.ac.uk/virtual)



You can also watch video tours given by a student on our YouTube channel:



Or visit [youtube.com/universityofchichester](https://youtube.com/universityofchichester) and click on playlists, then accommodation tours.

*“I loved living at Stockbridge student halls. It’s a social hub with around 400 students living there. It helped me make friends so quickly and I always loved chatting with people on the walk up to uni.”*

Crystal, BA (Hons) Theatre, Stockbridge Halls, Chichester City



# Support and security

Our halls are professionally managed, secure and well maintained. You will be supported by our team in the Accommodation Office 24/7, so you will feel right at home.



## Our people

- David Bailey, Estates and Facilities Management Director
- Charles White – Head of Campus and Residential Services
- Joe Ayres – Accommodation Manager

We pride ourselves on the support we provide to all of our residential students. That is why all of our halls are provided with dedicated Accommodation Office staff who, along with our out-of-hours staff and Security teams, provide round-the-clock cover for our students.

## Support

- Accommodation offices:
  - 8.00am to 4.30pm
- Security:
  - 4.30pm to 8.00am weekdays
  - 24-hours at weekends
- Duty managers:
  - 5.30pm to 6.00am every day
- Staff wardens (Chichester and Bognor Campuses):
  - 8.00pm to 12.30am, 3 days a week

Email: [accommodation@chi.ac.uk](mailto:accommodation@chi.ac.uk)

## Transport

Both the Bognor Regis and Chichester campuses are no more than a 15-minute walk from the respective city/town centre, and both are close to local parks offering plenty of green space in which to relax or socialise. The U7 inter-campus bus service travels between Chichester and Bognor Regis, calling at both campuses and key areas along the way. There is a train station in Chichester providing good transport links to Portsmouth, Brighton, and London – and Bognor Regis has its own rail transport to London with changes at Barnham for trains to Chichester.



# How to find us

Our two campuses in Chichester and Bognor Regis are located on the South Coast in West Sussex, between Portsmouth and Brighton, they have excellent road and rail links to London.

## **Travelling to Chichester**

### **By train**

If you are travelling to Chichester via London, the trains run from London Victoria station. Alternatively, you can travel from London Waterloo to Havant and change there for Chichester.

### **By car**

Bishop Otter campus – PO19 6PE

## **Travelling to Bognor Regis**

### **By train**

If you are travelling to Bognor Regis via London, the trains run from London Victoria station. It is sometimes necessary to change trains at Barnham station for Bognor Regis, please check this before travelling.

### **By car**

Bognor Regis campus – Felpham Way entrance, PO22 7BN





## CONTACT US

This brochure provides you with information about the range of accommodation options available to you whilst studying at the University of Chichester. We hope it gives you all the details needed, however if you require any further information our Accommodation team will be happy to assist.

### Bishop Otter Campus

University of Chichester  
College Lane, Chichester  
West Sussex  
PO19 6PE

- +44 (0)1243 816069
- accommodation@chi.ac.uk

### Bognor Regis Campus

University of Chichester  
Upper Bognor Road, Bognor Regis  
West Sussex  
PO21 1HR – For parking use the Felpham Way entrance, PO22 7BN

- +44 (0)1243 812120
- accommodation@chi.ac.uk

### Additional Contacts

- Academic Registry: +44 (0)1243 816027
- Admissions: +44 (0)1243 816002
- Disability and Dyslexia Service: +44 (0)1243 812076
- Financial Welfare: +44 (0)1243 816038
- Students' Union: +44 (0)1243 816394
- Student Advisor: +44 (0)1243 816238
- Health and Safety: +44 (0)1243 816488

## DISCLAIMER

Information within this brochure is correct at the time of printing in April 2024. All descriptions of sharing ratios within accommodation are indicative of the large majority of buildings, however there are some variations to this between buildings due to layout and design. Check out our website for the most up-to-date information: [chi.ac.uk/accommodation](https://chi.ac.uk/accommodation).