



UNIVERSITY OF
CHICHESTER

Careers and Employability Service

Study Abroad

with the University of Chichester



Why Study Abroad?

*Discover new
cultures, languages
& perspectives*



*Gain resilience,
initiative and grow
in confidence*

*Make friends from
around the world &
expand your network*



Where and when can you go?



One
Semester



Earn credits
while abroad

During your
second year
of study



Or a full
academic
year



Where and when can you go?

Subject Specific Locations:

Radboud University (Netherlands)

Haaga Helia University of Applied Sciences (Finland)

Ausburg University of Applied Sciences (Germany)



[Click here to view the full list of partner universities](#)

Institution-Wide Partnerships:

California State University (USA)

Christopher Newport University (USA)

University of Northern Iowa (USA)

Queens CUNY, New York (USA)

Mercer University (USA)

Columbus State University (USA)

Thompson Rivers University (Canada)

University of New Brunswick (Canada)

How to apply





Deadlines



Deadlines for your application with us

September to 10 January 2026: applications
open for Fall semester 2026/full year
2026/2027

January 2026: interviews

February to 17 April 2026: applications open for
Spring semester 2027

April-May 2026: interviews

*All students wanting to apply for York University and California State University must apply
between October - December for all departure dates*

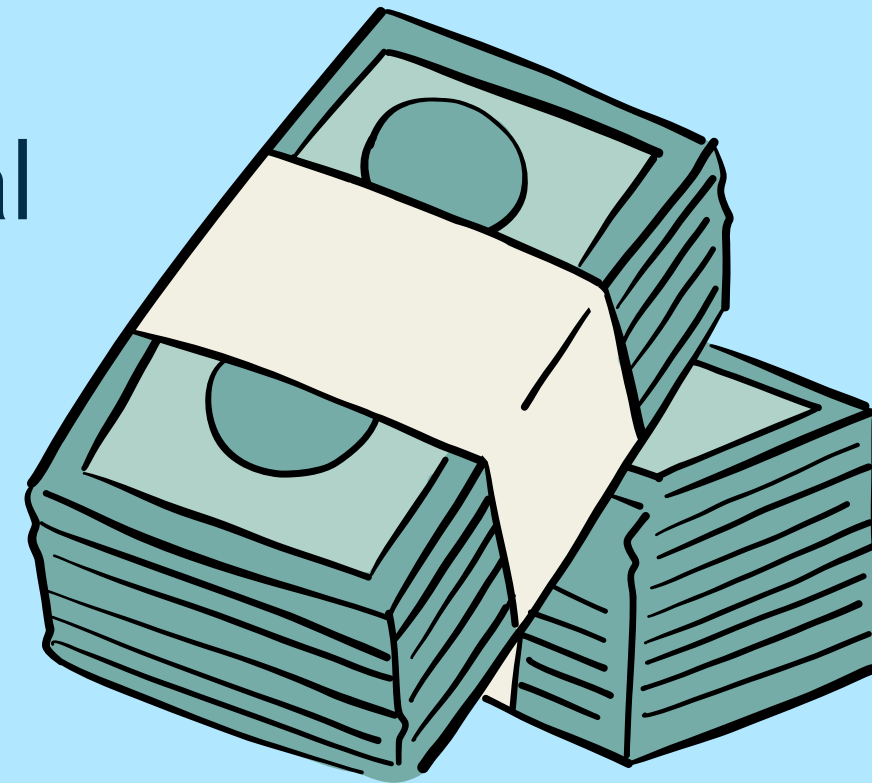


Funding

All exchanges with our Partner Universities are fee-waived exchanges: you do not pay tuition to your host institution

All - year exchange: you only pay 15% of your tuition fees to the University of Chichester

Semester exchange: you pay your tuition fees as normal to the University of Chichester



Funding

Student Finance travel grants (eg SFE, SFW grants):

One return flight, visa, travel abroad, travel to and from airport and medical insurance costs (normally assessed on your household income) – you first pay £303 and remaining costs can then be claimed

Funding

Turing funding (UK Government):

Requires documentation & evidence

We apply on your behalf

rate depends on location & length of stay (between £13-£20 /day)

uplift for disadvantaged or students with disabilities (+ covers visa, health insurance, portion of travel costs, any cost related to support for additional needs)

The logo for the Turing Scheme consists of two horizontal arrows pointing to the right. The top arrow is black with the word 'TURING' in white, bold, uppercase letters. The bottom arrow is teal with the word 'SCHEME' in black, bold, uppercase letters.

TURING

SCHEME

Funded by the UK's global
programme to study and work abroad

Example

Disadvantaged Student, in the USA or Canada with household income under £30,000

20th August to 22nd May (1 year)

Turing Living Grant of £3,582, 80% paid in September*, 20% on return*

Turing Uplift Grant of £1,037

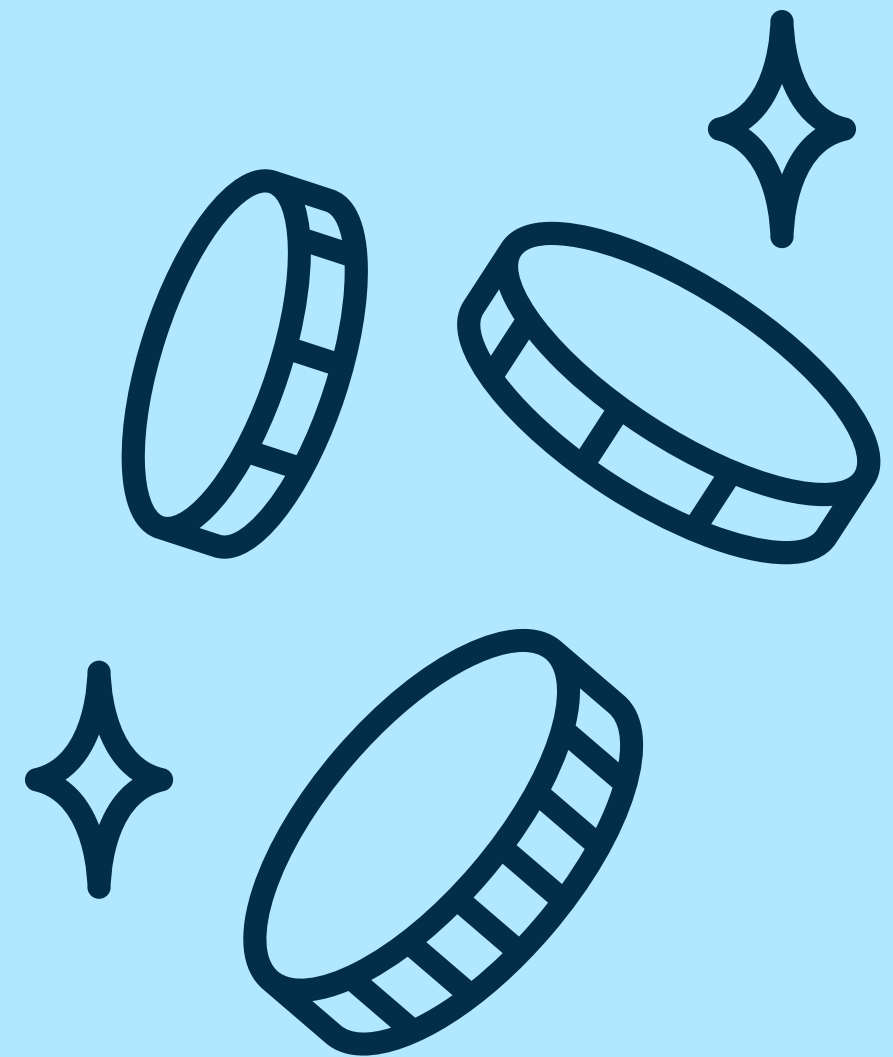
Turing Travel Grant of £750, 80% paid in September*, 20% on return*

Funding

Maintenance loan:

If you are entitled to it, you will keep receiving it

Rate might be higher but we cannot guarantee exact amount

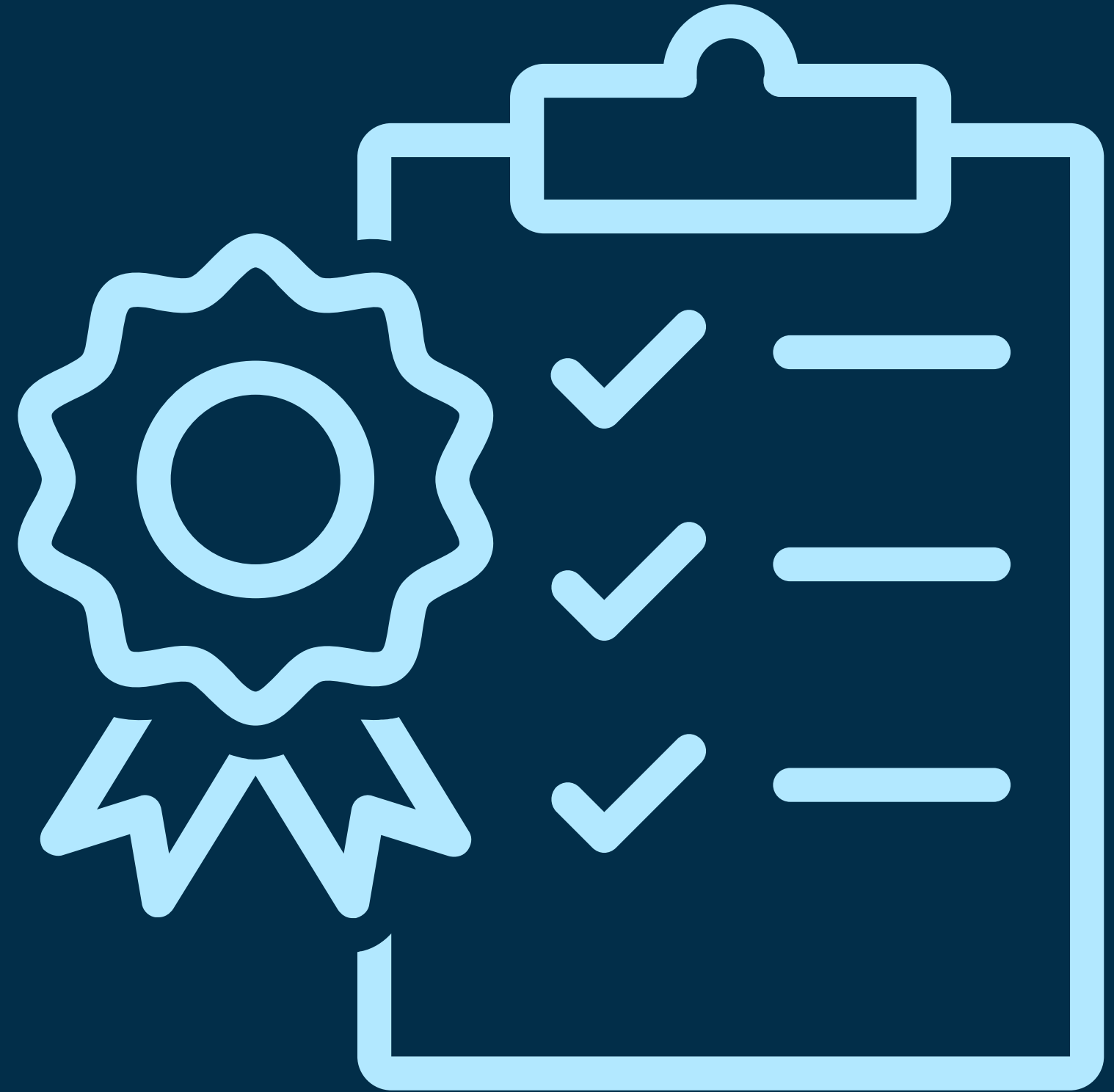


Eligibility

Minimum grade of overall 55%

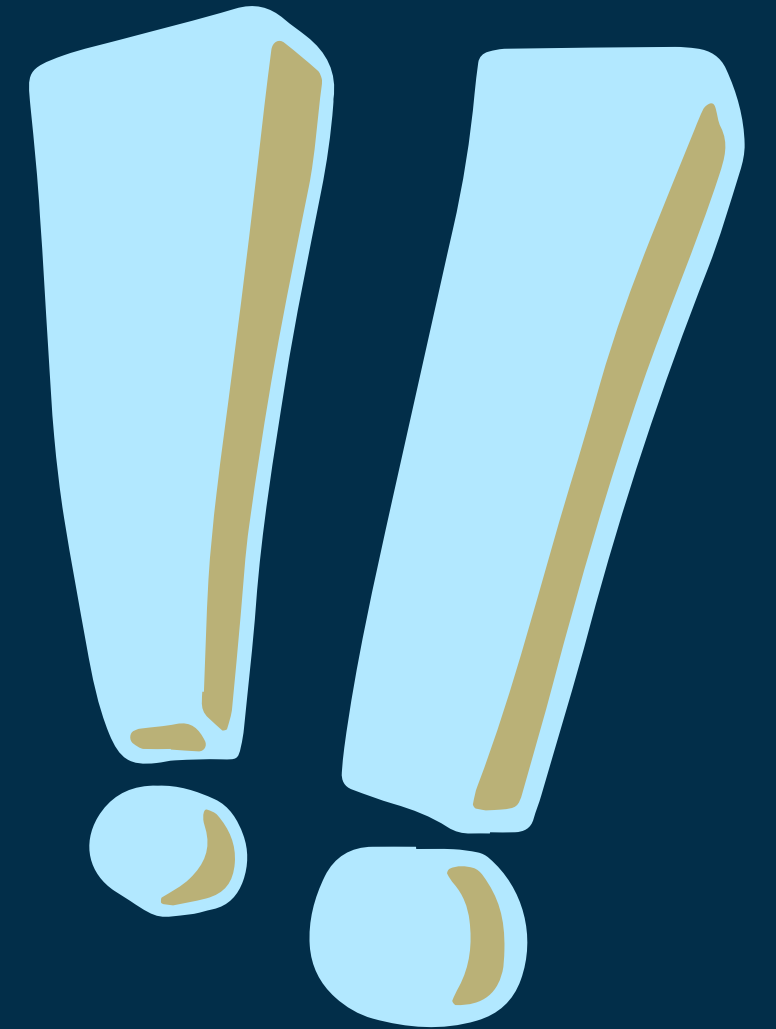
Attendance of at least 70%

Extenuating circumstances will
be considered by your
Exchange Coordinator



Important things to think about

- Accommodation (both during your stay abroad & once you come back to Chichester)
- Visa process: obtaining a visa is your responsibility because we cannot offer legal advice – however, expectation is that the host University will have a dedicated office to support you
- Foreign, Commonwealth & Development Office travel advice [here](#)
- Insurance (both for travel & medical purposes)



Summer and International Programmes

Disney – Central Michigan
University Academic Exchange
Programme

July 2027– July 2028
interviews in 2026



View our Study Abroad
summer programmes in our
leaflet

